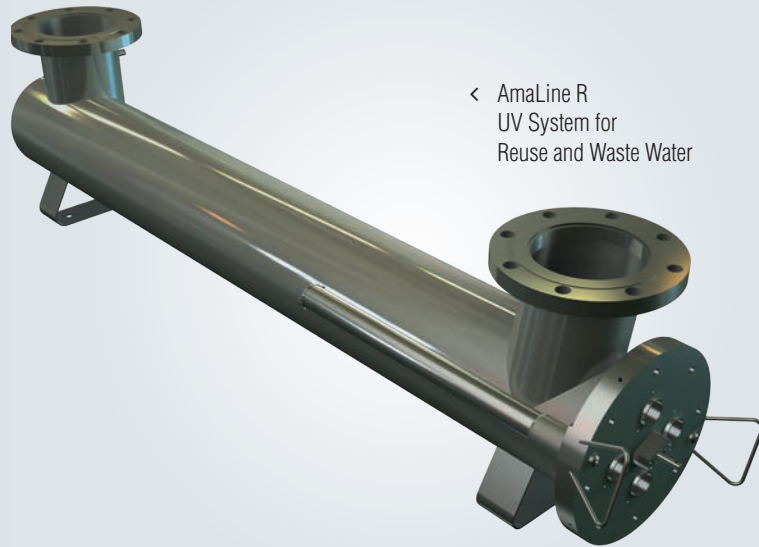
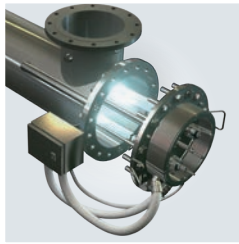
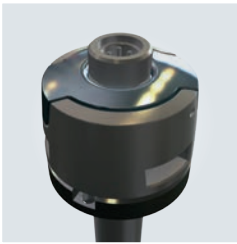


AmaLine R Range

UV FOR MUNICIPAL WASTE AND REUSE



- ✓ Patented lamp connector provides user safety and easy servicing
- ✓ Sleeves and wiper can be changed quickly and easily by a single operator



◀ AmaLine R
UV System for
Reuse and Waste Water

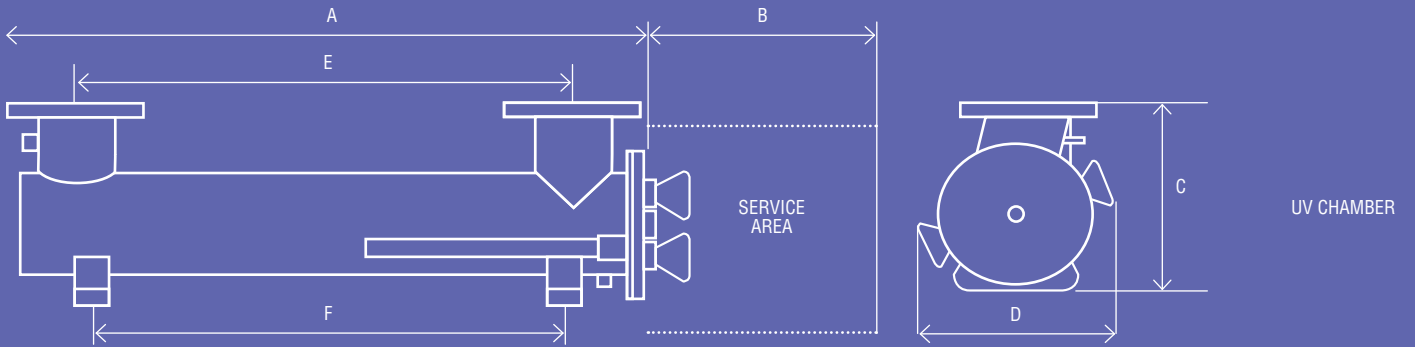
AMALINE R FOR WASTEWATER AND RECLAIMED WATER

Aquionics AmaLine R systems are designed for the wastewater and reclaimed water market with energy efficiency and ease of maintenance in mind.

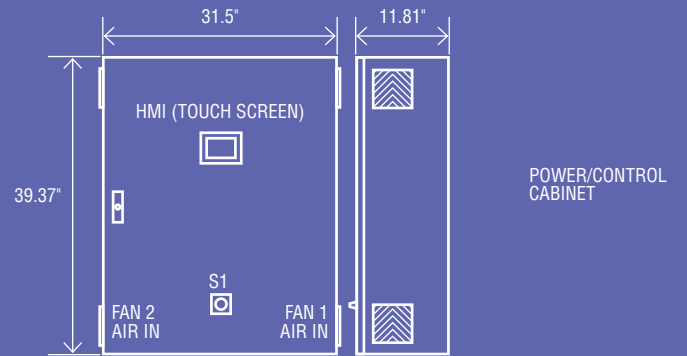
- By utilizing amalgam lamps and a patented inlet reactor configuration, energy efficiency combined with low head loss provides an optimized design for this system.
- The unit is provided with automatic wiping to extend lamp life.
- A single operator can perform all maintenance requirements without the need for additional equipment or support.

KEY FEATURES	WHAT IT GIVES YOU	BENEFITS FOR YOU
Easy maintenance	Simple extending support arms to allow for quartz sleeve and wiper blade replacement	Single operator can quickly and easily carry out the maintenance without requiring external lifting equipment
Improve operator safety with patented lamp connector	Lamp orientation is fixed ensuring easy and safe installation and optimum performance	Simple, quick and safe lamp changes that self-align, allowing for minimum downtime and assurance of optimal system operation. Operator friendly design
	Lamp cannot be removed while chamber is energized	Protects operator from harm during lamp changes
	Lamp connector cannot be removed from pressurized system in the event of a broken sleeve	Protects operator from harm during servicing
Optimized design	Efficient chamber design using CFD modelling, optimizes lamp(s) positioned in chamber	Ensures peak energy efficiency from the optimum distribution of intensity throughout the chamber, providing effective treatment
	Low pressure, high intensity, amalgam lamp technology with variable output ballasts (50 to 100%) provides low energy UV disinfection	Optimized power use for energy savings, low running temperature and greater lamp life
	U shape chamber design, provides effective treatment of low UVT water and easy installation	Provides efficient treatment, and can be integrated easily into existing pipework
Validations	UVDGM [2006]	Meets the latest USEPA drinking water standards
	NWRI [2012] for reuse	Reuse water certification with high energy efficiency

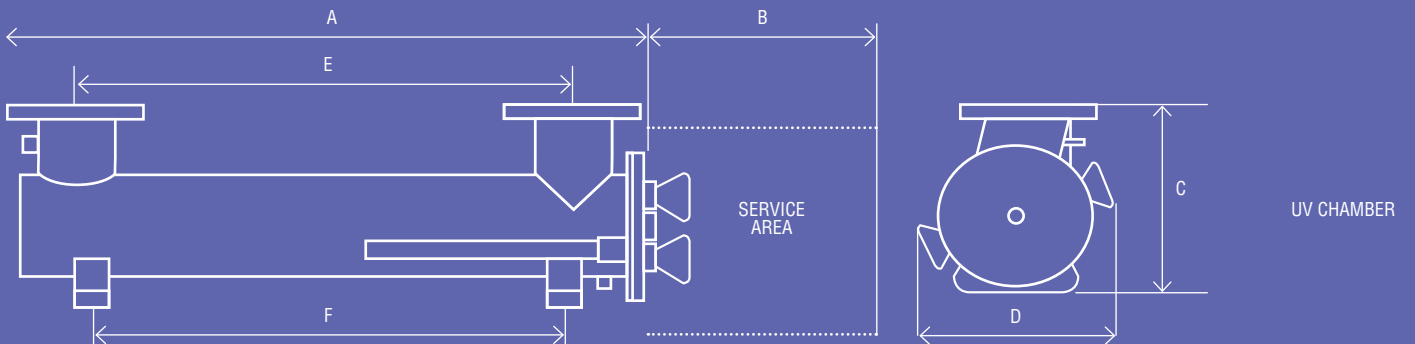
AmaLine IOOR



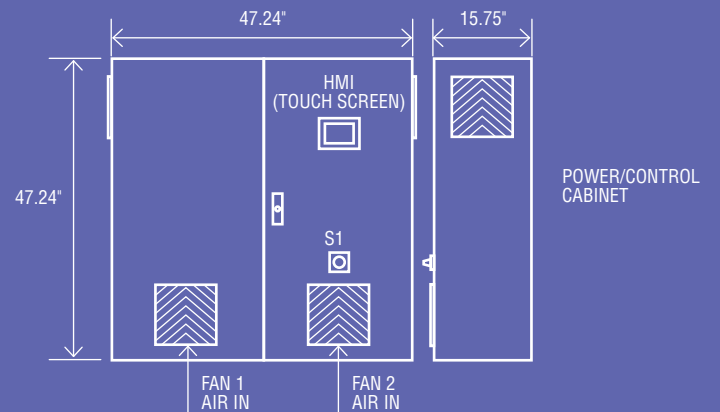
AmaLine 100R	A	B	C	D	E	F
Dimensions (inches)	67.3	59	16.5	14.8	55.8	51.6



AmaLine 300R



AmaLine 300R	A	B	C	D	E	F
Dimensions (inches)	71.1	59	26.6	22.6	53.9	50.8



UV CHAMBER SPECIFICATIONS		100R	300R
UV Chamber:	Cylindrical stainless steel reactor	✓	✓
Material:	Stainless Steel 316L, internal finish Ra _{max} 32 μin	✓	✓
Degree of Protection:	NEMA 12	✓	✓
Connection:	6" ANSI (150 lb)	✓	
	10" ANSI (150 lb)		✓
Chamber Configuration:	"U" Shaped	✓	✓
Weight (dry):	TBD	✓	✓
UV Lamp Type:	500 W - LPHO (Amalgam)	✓	✓
Number of Lamps:	4	✓	
	12		✓
Sleeves:	Fused Quartz (Type 214)	✓	✓
Sleeve Cleaning System:	Automatic Wiping	✓	✓
Operating Pressure:	145 psi	✓	✓
Working Fluid Temperature Range:	41 °F to 95 °F	✓	✓
Maximum Hydraulic Flow:	1415 gpm	✓	
	4406 gpm		✓

ELECTRICAL CABINET SPECIFICATIONS		100R	300R
Electrical Cabinet:	Combined power/control cabinet	✓	✓
Dimensions:	39.4 x 31.5 x 11.8 in (HxWxD);	✓	
	47.2 x 47.2 x 15.7 in (HxWxD);		✓
Weight:	198 lbs	✓	
	287 lbs		✓
Material & Color:	Painted Steel, RAL7035	✓	✓
Degree of Protection:	NEMA 12 - Indoor	✓	✓
Standard Cable Length (Cabinet to Reactor):	16 ft		✓
	30 ft	✓	
Ambient Operating Temperature Range:	41 °F to 104 °F	✓	✓
Maximum Ambient Humidity:	95% (non-condensing)	✓	✓
Controller:	Allen Bradley 850 Series (including Ethernet, Modbus)	✓	✓
Lamp Driver Type:	Electronic (stepless variable lamp output 50 to 100%)	✓	✓
Required Voltage Supply:	277/480 V 3L+N, 60 Hz	✓	✓
Maximum Power Consumption:	2.4 kW (± 5 %)	✓	
	6.9 kW (± 5 %)		✓
UL Labeling:	UL 508 A	✓	✓

OPTIONAL FEATURE SPECIFICATIONS
NEMA 4X Upgrade (w. cabinet air conditioners)
USEPA UVDGM 3 rd Party Validation – Pending
Temperature Sensor
Stainless Steel Cabinet Upgrade – NEMA 12
NWRI Guidelines [2012] Validation

Note: Deviation from standard may result in change of chamber and cabinet size.
Subject to change without notice

Aquionics Head Office, 4215 Stuart Andrew Blvd, Suite E, Charlotte, NC 28217
T: 980 256-5700 F: 980 598 8012 E: sales@aquionics.com W: www.aquionics.com

